

Purpose and Need Statement: Vergennes PEL Study

The ***purpose*** is to reduce the impacts of through truck traffic, including safety, congestion, noise, vibration, and dust on Route 22A in downtown Vergennes. Transportation solutions that reduce truck related quality of life impacts should also meet the mobility, safety, and economic vitality needs of Vergennes and the neighboring communities.

A summary of the ***needs*** identified are detailed below.



Mobility and Access: Maintain opportunities for the movement of freight in the region and minimize and/or mitigate traffic impacts to other transportation corridors.



Safety, Circulation and Resilience: Support the continued movement, resilience and safety of travel through downtown Vergennes and in the neighboring communities.



Quality of Life: Improve the quality of life and minimize negative property and environmental resource impacts in downtown Vergennes and neighboring communities.



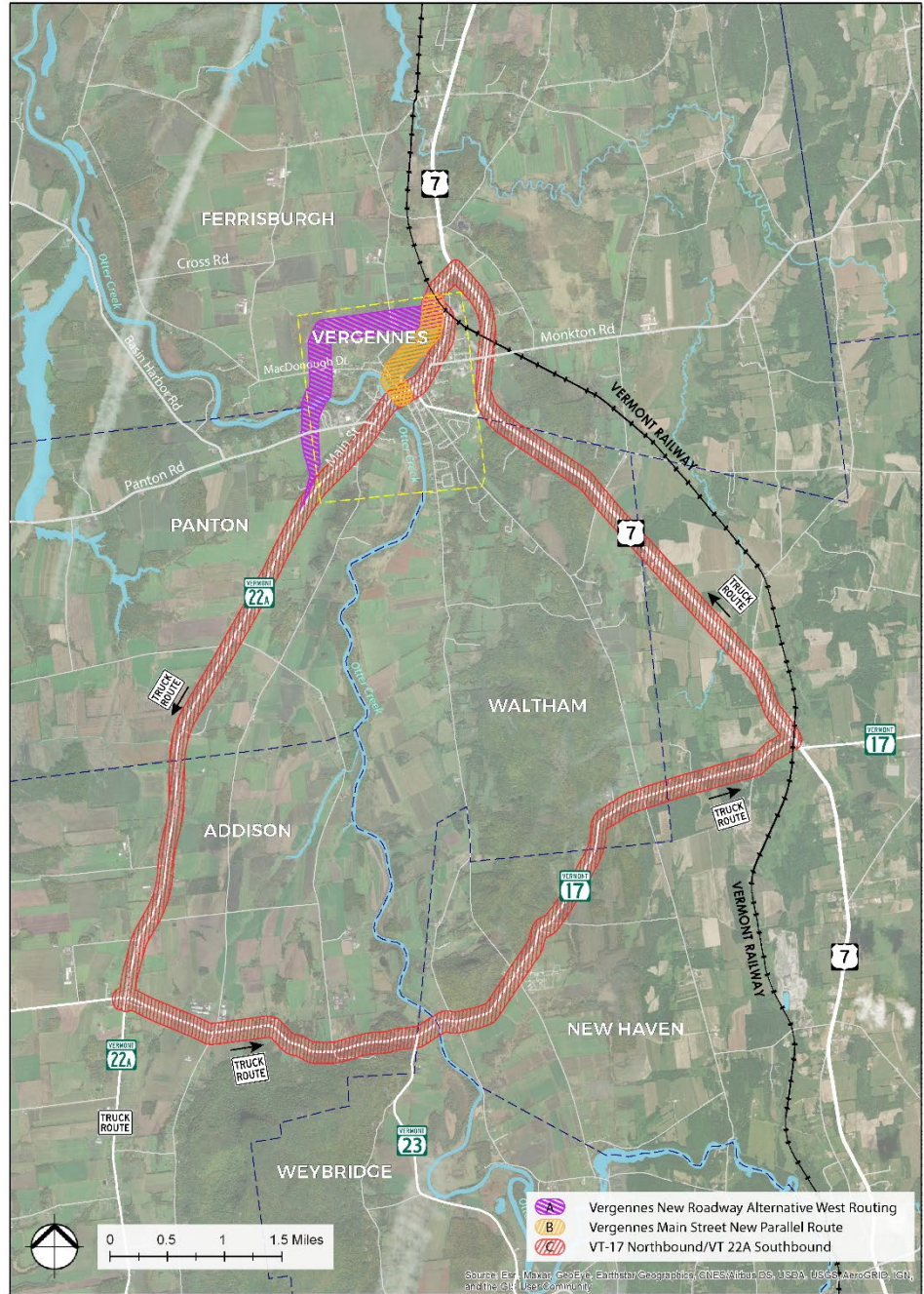
Land Use: Support local and regional land use plans and policies and state land use goals.



Economic Vitality: Promote economic vitality of downtown Vergennes, goods movement in Vergennes and neighboring communities, and support rural economy.

Concepts Proposed for Further Study

- Vergennes-Panton New Roadway (West Routing Option 4) [Purple]
- Vergennes Main Street New Parallel Route [Orange]
- VT-17 Northbound/VT 22A Southbound [Red]
- No Build option serves as baseline for comparison of benefits and impacts
- Recommended concepts can be supplemented by elements from some of the concepts that have been dismissed (e.g., smart freight, other modes)



Contact the Study Team

We welcome your input and appreciate your feedback. Please visit <https://vergennespel.com/> to join our email list for Study updates.

Please email the Study team at vergennespel@gmail.com for further information, to submit comments or to contact the Study team.