

# EXISTING ROAD ALTERNATIVES

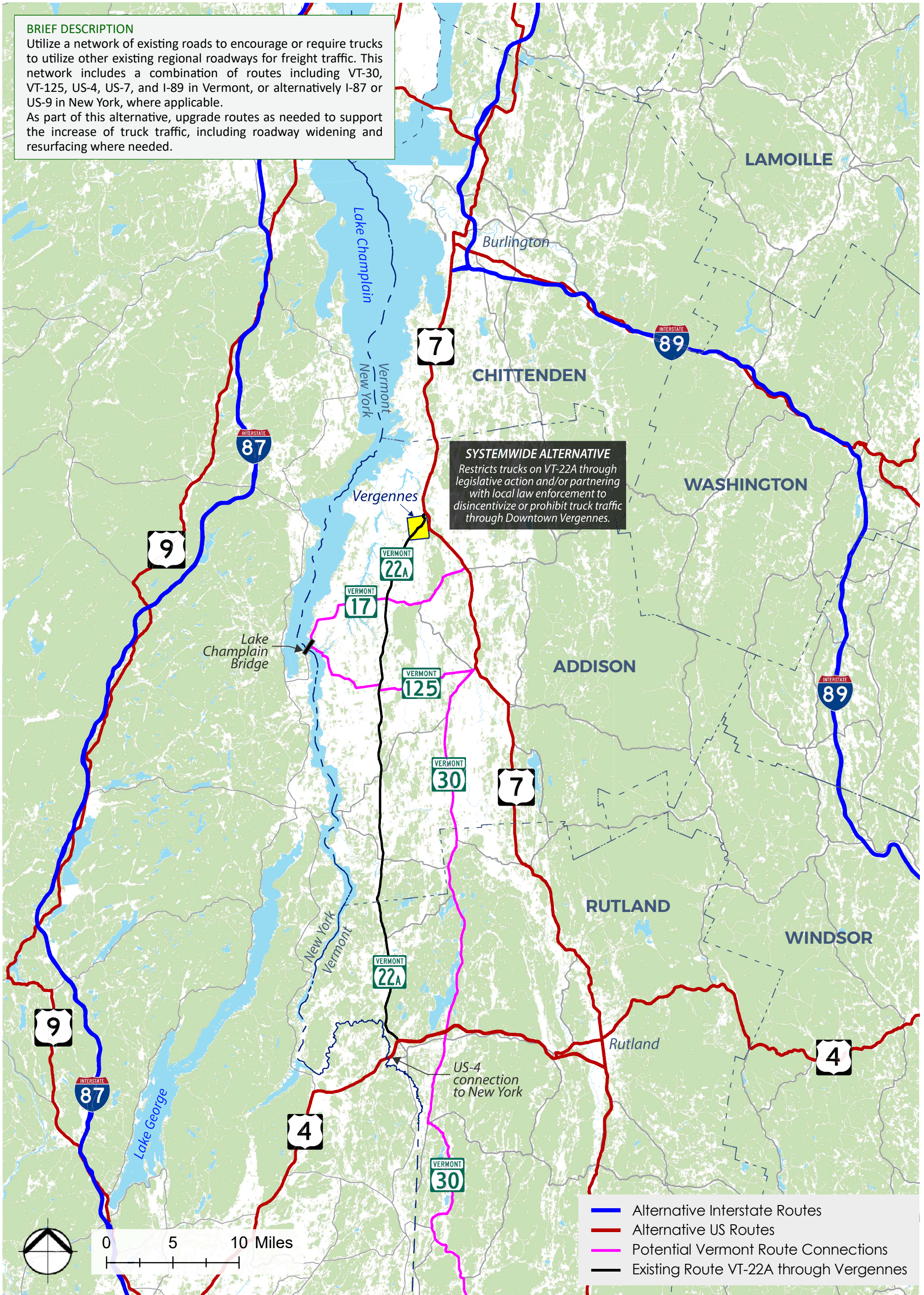
## SYSTEMWIDE ALTERNATIVE

### VERGENNES PLANNING AND ENVIRONMENT LINKAGES (PEL) STUDY

**BRIEF DESCRIPTION**

Utilize a network of existing roads to encourage or require trucks to utilize other existing regional roadways for freight traffic. This network includes a combination of routes including VT-30, VT-125, US-4, US-7, and I-89 in Vermont, or alternatively I-87 or US-9 in New York, where applicable.

As part of this alternative, upgrade routes as needed to support the increase of truck traffic, including roadway widening and resurfacing where needed.



**SYSTEMWIDE ALTERNATIVE**  
Restricts trucks on VT-22A through legislative action and/or partnering with local law enforcement to disincentivize or prohibit truck traffic through Downtown Vergennes.

- Alternative Interstate Routes
- Alternative US Routes
- Potential Vermont Route Connections
- Existing Route VT-22A through Vergennes

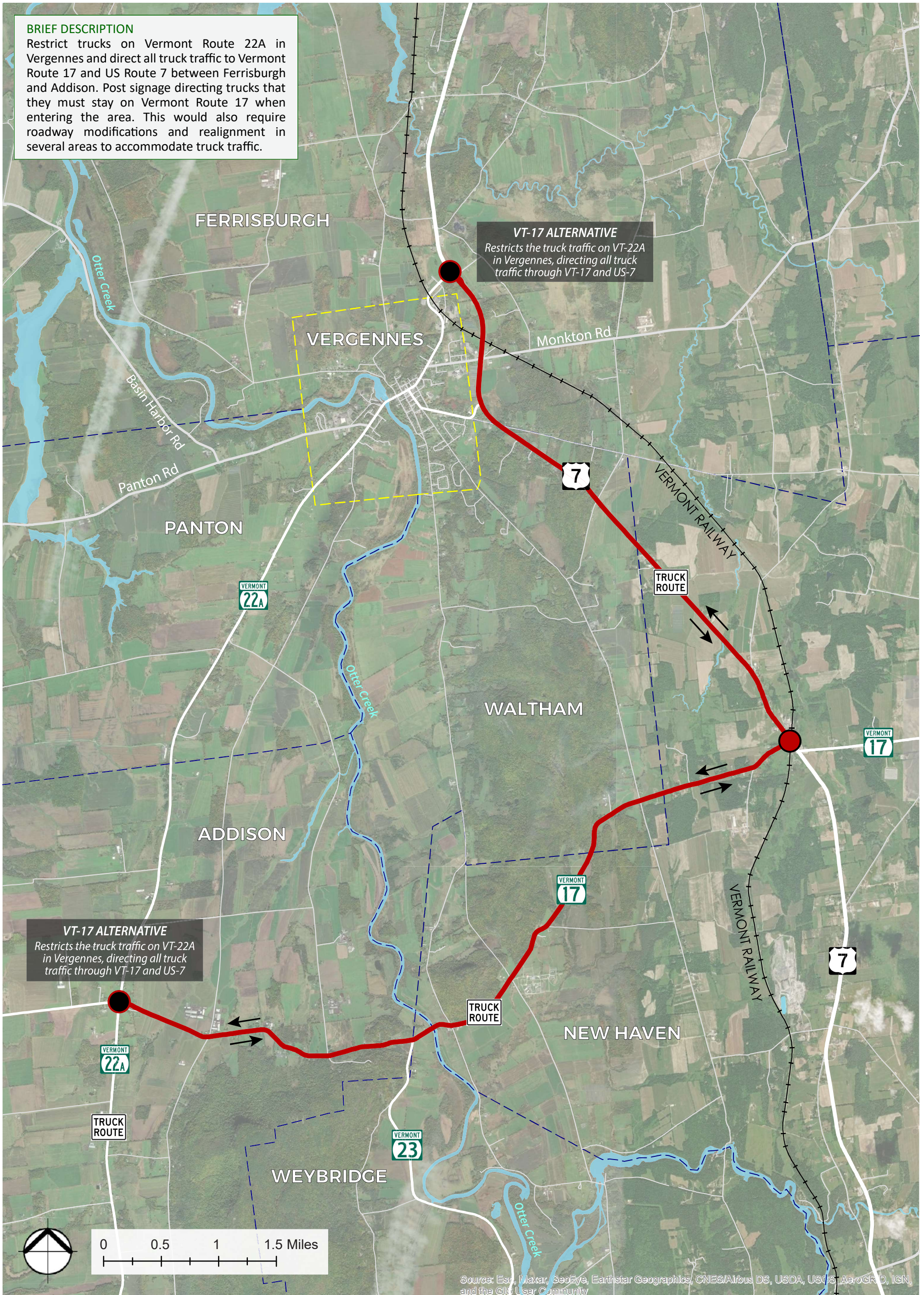
# EXISTING ROAD ALTERNATIVES

## VT-17 ALTERNATIVE

### VERGENNES PLANNING AND ENVIRONMENT LINKAGES (PEL) STUDY

**BRIEF DESCRIPTION**

Restrict trucks on Vermont Route 22A in Vergennes and direct all truck traffic to Vermont Route 17 and US Route 7 between Ferrisburgh and Addison. Post signage directing trucks that they must stay on Vermont Route 17 when entering the area. This would also require roadway modifications and realignment in several areas to accommodate truck traffic.



**VT-17 ALTERNATIVE**  
Restricts the truck traffic on VT-22A in Vergennes, directing all truck traffic through VT-17 and US-7

**VT-17 ALTERNATIVE**  
Restricts the truck traffic on VT-22A in Vergennes, directing all truck traffic through VT-17 and US-7

Source: Esri, Maxar, GeoEye, Earthstar Geographics, CNES/Airbus DS, USDA, USGS, AeroGRID, IGN, and the GIS User Community