

NEW ROAD ALTERNATIVES

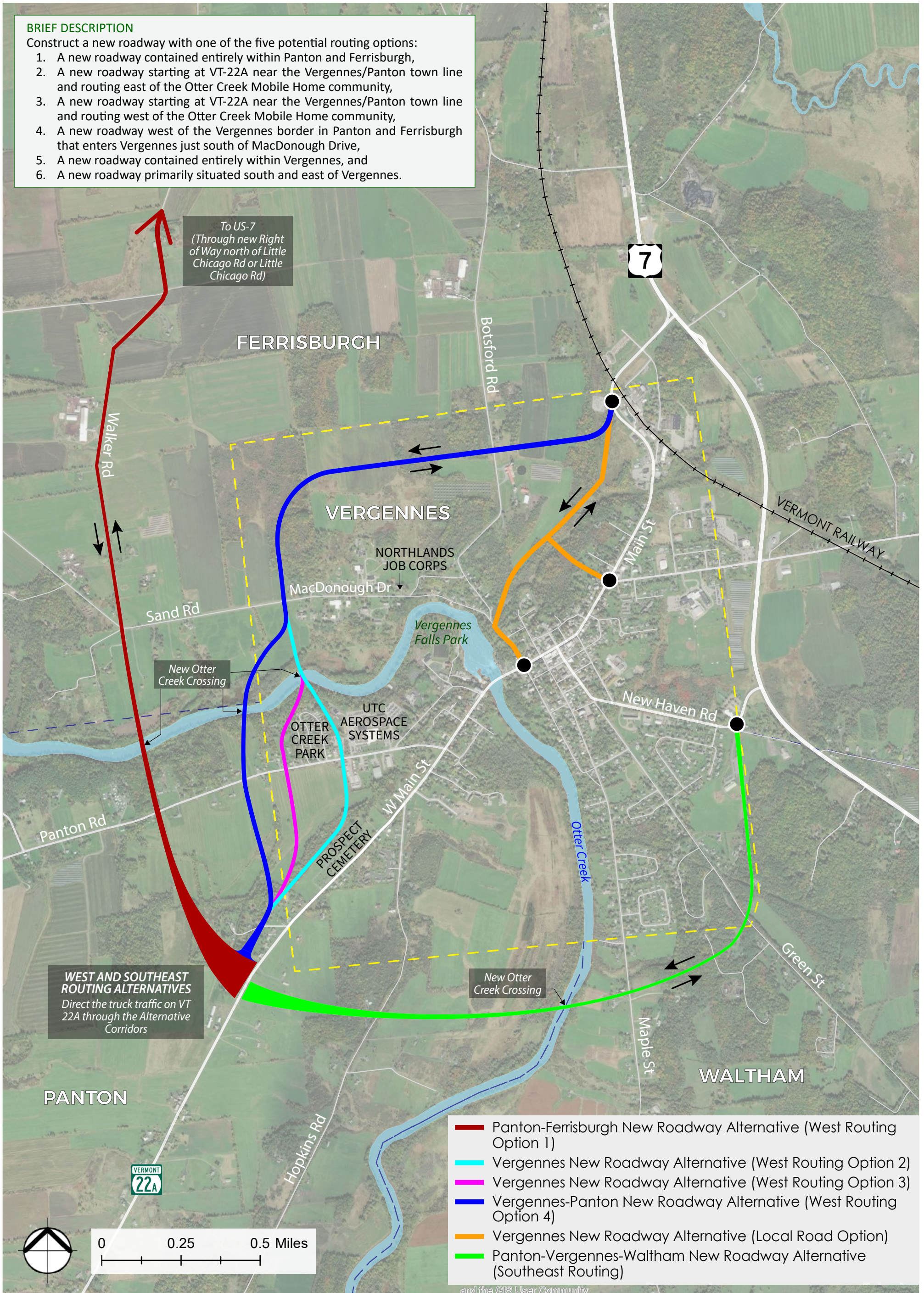
WEST AND SOUTHEAST ROUTING ALTERNATIVES
VERGENNES PLANNING AND ENVIRONMENT LINKAGES (PEL) STUDY

BRIEF DESCRIPTION

Construct a new roadway with one of the five potential routing options:

1. A new roadway contained entirely within Panton and Ferrisburgh,
2. A new roadway starting at VT-22A near the Vergennes/Panton town line and routing east of the Otter Creek Mobile Home community,
3. A new roadway starting at VT-22A near the Vergennes/Panton town line and routing west of the Otter Creek Mobile Home community,
4. A new roadway west of the Vergennes border in Panton and Ferrisburgh that enters Vergennes just south of MacDonough Drive,
5. A new roadway contained entirely within Vergennes, and
6. A new roadway primarily situated south and east of Vergennes.

To US-7
(Through new Right of Way north of Little Chicago Rd or Little Chicago Rd)



WEST AND SOUTHEAST ROUTING ALTERNATIVES
Direct the truck traffic on VT 22A through the Alternative Corridors

- Panton-Ferrisburgh New Roadway Alternative (West Routing Option 1)
- Vergennes New Roadway Alternative (West Routing Option 2)
- Vergennes New Roadway Alternative (West Routing Option 3)
- Vergennes-Panton New Roadway Alternative (West Routing Option 4)
- Vergennes New Roadway Alternative (Local Road Option)
- Panton-Vergennes-Waltham New Roadway Alternative (Southeast Routing)