

# Planning & Environment Linkages (PEL) Study



## Do You Live, Work, or Travel Through Northern Addison County?

The Vergennes PEL Study is a three-year, in-depth study to evaluate transportation alternatives that could reduce the impact of large truck traffic on Vermont’s Route 22A as it passes through Vergennes. The study will consider the economic vitality, environment, and quality of life in the northern Addison County communities of Vergennes, Ferrisburgh, Panton, Waltham, Addison, New Haven, and Weybridge.

### Purpose and Need

The *purpose* is to reduce the impacts of through truck traffic, including safety, congestion, noise, vibration, and dust on Route 22A in downtown Vergennes. Transportation solutions that reduce truck related quality of life impacts should also meet the mobility, safety, and economic vitality needs of Vergennes and the neighboring communities. A summary of the *needs* identified are detailed below.



**Mobility and Access:** Maintain opportunities for the movement of freight in the region and minimize and/or mitigate traffic impacts to other transportation corridors.



**Safety, Circulation and Resilience:** Support the continued movement, resilience and safety of travel through downtown Vergennes and in the neighboring communities.



**Land Use:** Support local and regional land use plans and policies and state land use goals.



**Economic Vitality:** Promote economic vitality of downtown Vergennes, goods movement in Vergennes and neighboring communities, and support rural economy.



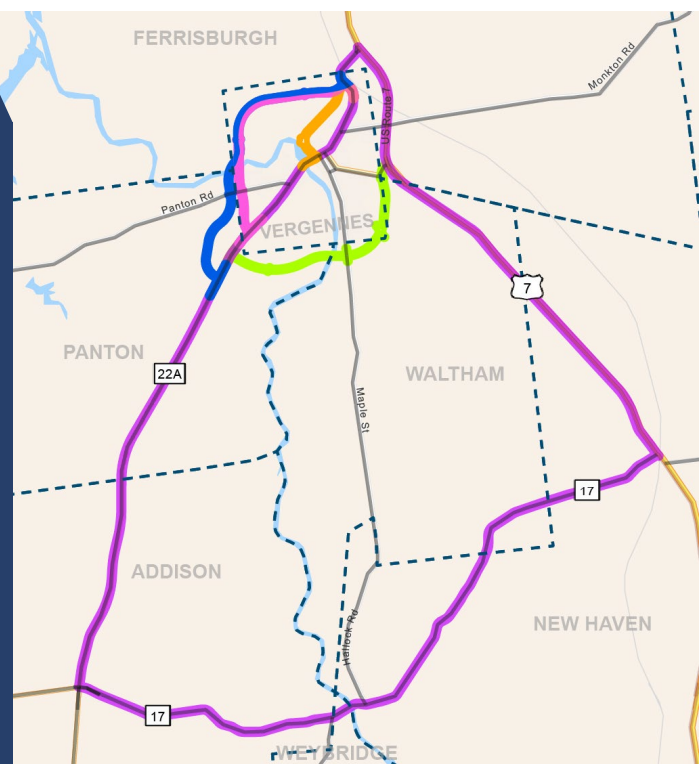
**Quality of Life:** Improve the quality of life and minimize negative property and environmental resource impacts in downtown Vergennes and neighboring communities.

### Routing Options Currently Being Studied

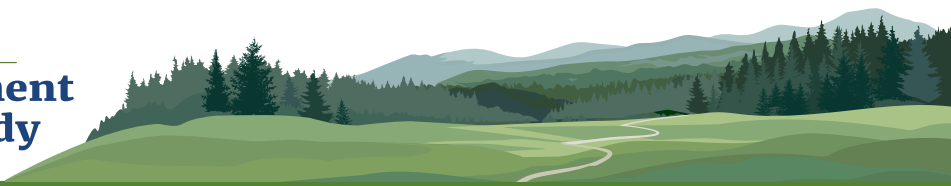
Four new roadways are being studied along with an option that uses existing roadways and a no build that assumes no changes beyond normal routine maintenance. The five build options are shown on the figure to the right.

### How Can I Get Involved and Learn More?

Anyone who lives or works in Vergennes and the surrounding communities or travels Route 22A through the study area is a stakeholder, and your opinion is important. Visit the PEL Study’s website to stay up to date on the study, upcoming public meetings, and surveys. [www.vergennespel.com](http://www.vergennespel.com)



# Planning & Environment Linkages (PEL) Study



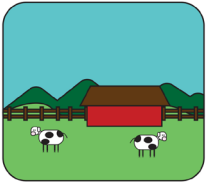
## If the Route is built, what is your vision for the land uses along it?

During the workshops, we will discuss a vision for the land uses along one or more of the proposed routes. The following topics will be discussed:

1. Explore the land uses around the proposed route
2. Identify preferred residential and commercial streets
3. Consider walking and biking along the proposed route
4. Consider the region's recreational for residents, families, and visitors
5. Identify a road within the region that is reflective of the surrounding land uses that you envision the route could be

## Land Use Types and Examples

Agricultural/ Farmland



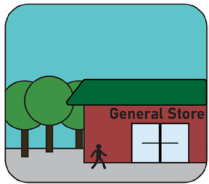
- **Scuttleship Farm**, Panton Road in Panton
- **Solar Arrays, Outdoor Dog Agility Course/Play Yard**, Comfort Hill in Vergennes

Open Space/ Recreation



- **Button Bay State Park** in Ferrisburgh
- **Dead Creek** in Addison, Panton, and Ferrisburgh
- **City Green** in Vergennes

Commercial/ Retail



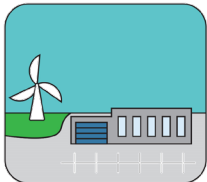
- **Kayhart's Home Grown Meat – Farm Store**, Route 17 in New Haven
- **The Basin Block**, Main Street and Maple Street in Vergennes

Municipal/ Community Center



- **Community Baptist Church and Town Hall** in Addison
- **Champlain Valley Christian Reformed Church** in Waltham
- **Ferrisburgh Central School** in Ferrisburgh

Industrial



- **WowToyz**, Panton Road in Vergennes
- **Shacksbury Cider**, Meigs Road, Vergennes
- **Maple Landmark Woodcraft**, Exchange Street in Middlebury

Walk/ Bike Facility



- **Sidewalk and Crosswalk** in Vergennes
- **Bike Lane** in Shelburne
- **Multi-Use Path** in Colchester

## Land Use Comments

The study team will accept comments related to land use visioning along the potential routes by **December 18**. Comments can be sent by email to: [vergennespel@gmail.com](mailto:vergennespel@gmail.com) or via the study website: [www.VergennesPEL.com](http://www.VergennesPEL.com).

Questions or Comments not related to Land Use?

Contact your Community Liaison, Jim Gish  
 Email: [jgish@vhb.com](mailto:jgish@vhb.com) Phone: 802-989-0608