



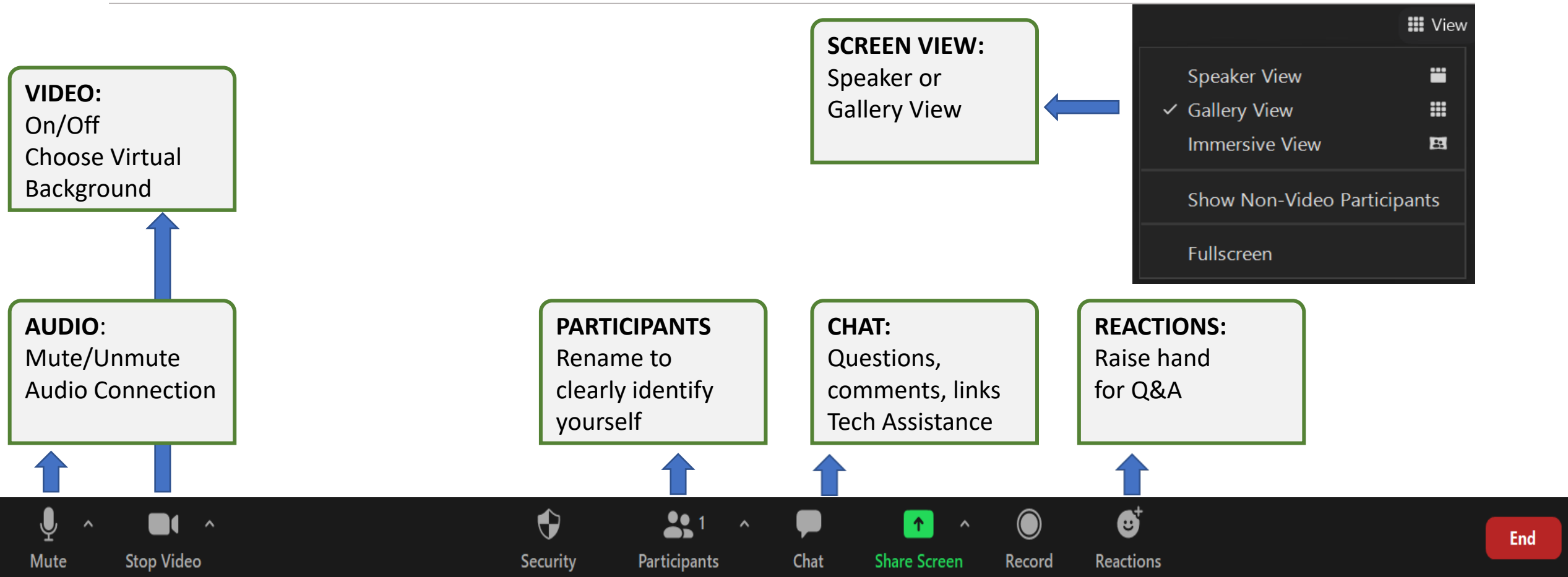
Vergennes Planning and Environment Linkages (PEL) Study: Land Use Visioning Workshop

Virtual Workshop

January 9, 2024



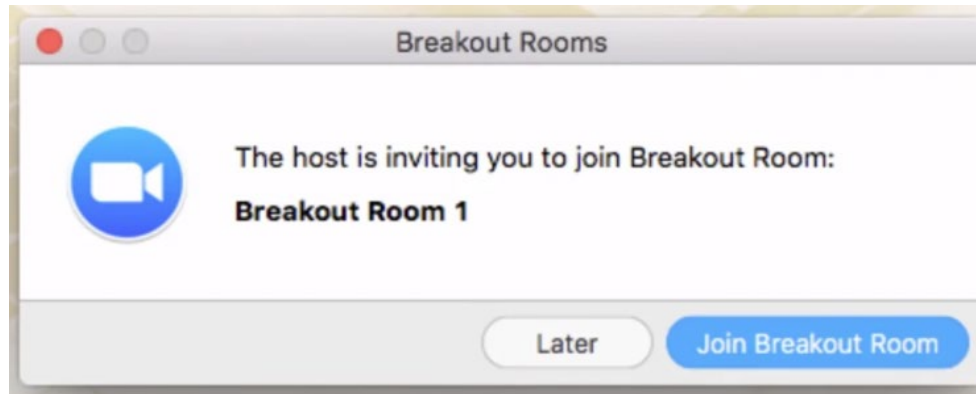
Zoom Orientation



Breakout Room Guidance

JOIN A BREAKOUT ROOM:

When breakout rooms are open you should be prompted to join a room set up by the meeting host. The room assignment will be based on the polls attendees will be asked to complete. When the box appears, please click Join Breakout Room.



TECHNICAL ISSUES?

We will help!

If you are not prompted, the host will be able to move to you a room once the majority of people move to their breakout room. If you are having issues, please wait in the main room and the Team will assist in moving people to the route they are interested in discussing.

Quick ice-breakers!

We have a few quick polls to get us started!

- Have you attended one of the other workshops?
- Where do you live?
- Where do you work?
- How old are you?

- Which two breakout groups would you like to attend?

What will we be doing today? What is “Land Use Visioning”?

- Presentation
 - PEL Study context
 - Land Use context
- Workshop – 2 sessions (choose 2 routes)
- Next steps
- Hear comments related to the routes in general

What if the [COLOR] Route is built?

- How would you like the land around it to be used?
- Homes? Businesses? Open space? Farmland?
- How would you like the area to feel?



Study Overview



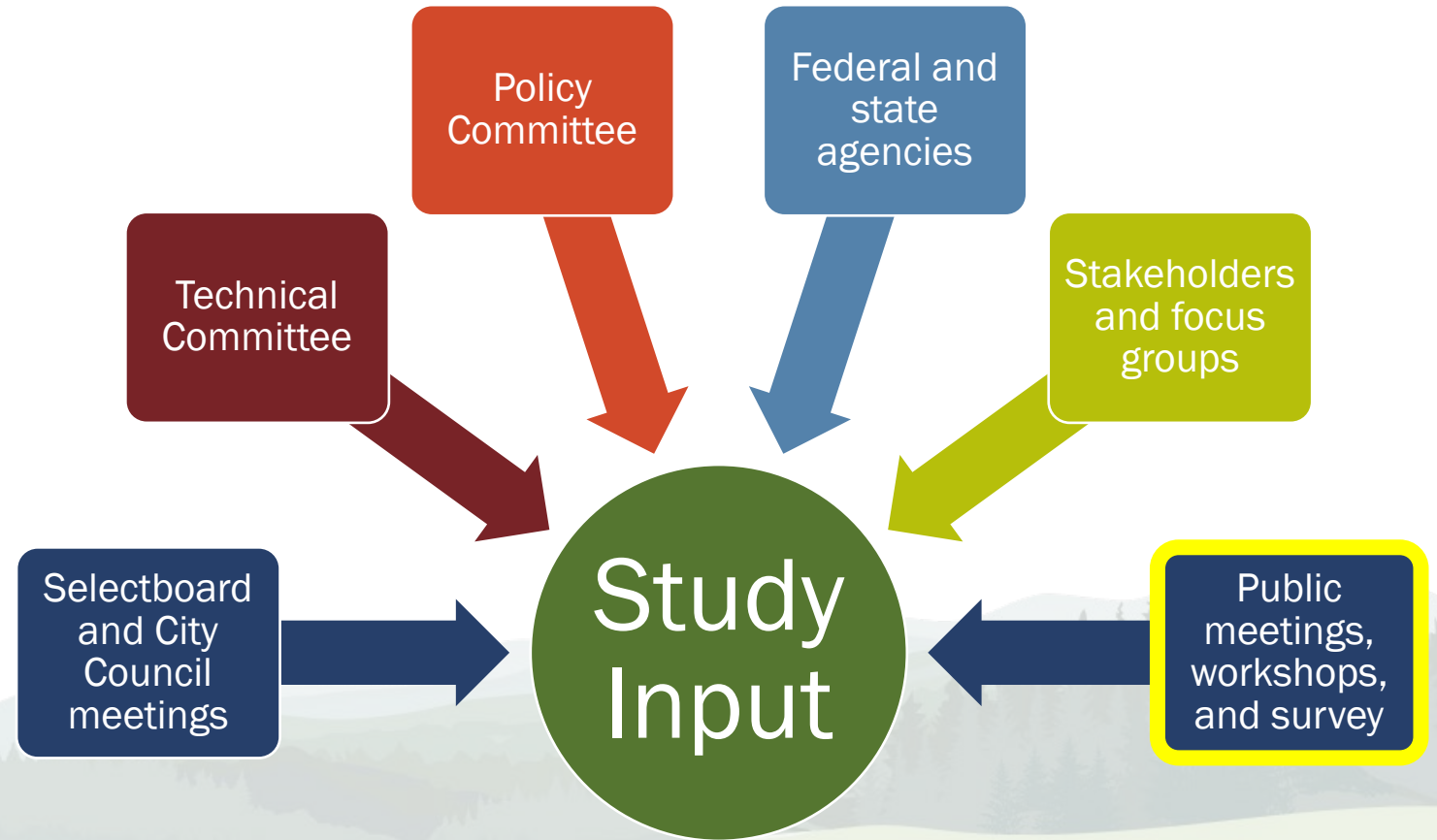
Why are we doing a PEL Study in and around Vergennes?

- Previous studies indicated regional agreement that truck volume in downtown Vergennes should be addressed.
- This PEL Study allows us to go:
 - Wider in our outreach and engagement
 - Deeper into details, including conceptual design and land use visioning
- This PEL Study is the "last word" on a potential alternative truck route.
- If a road solution moves forward, the work of the PEL Study can help to streamline a future review process.



What is a Planning and Environment Linkages (PEL) study?

- PEL is a federal process that takes a collaborative approach to better inform and accelerate a project if it moves forward toward being built



Where are we in the overall timeline?

PEL Study (2021-2025)

Completed Tasks

- Define what we are working towards - *Purpose and Need Statement*
- Narrow down full list of concepts



Current & Upcoming Tasks

- Land use visioning
- Conceptual design
- Concept Evaluation
- Implementation Plan
- Finalize report



Future steps if the study concludes construction is needed:

Obtain Funding

- *Timeline: Unknown*



Design & Engineering

- *Timeline: 7-13 years*
- Conceptual, Draft and Final Design
- Environmental Studies & NEPA
- Permitting
- Right-of-Way Acquisitions



Construction

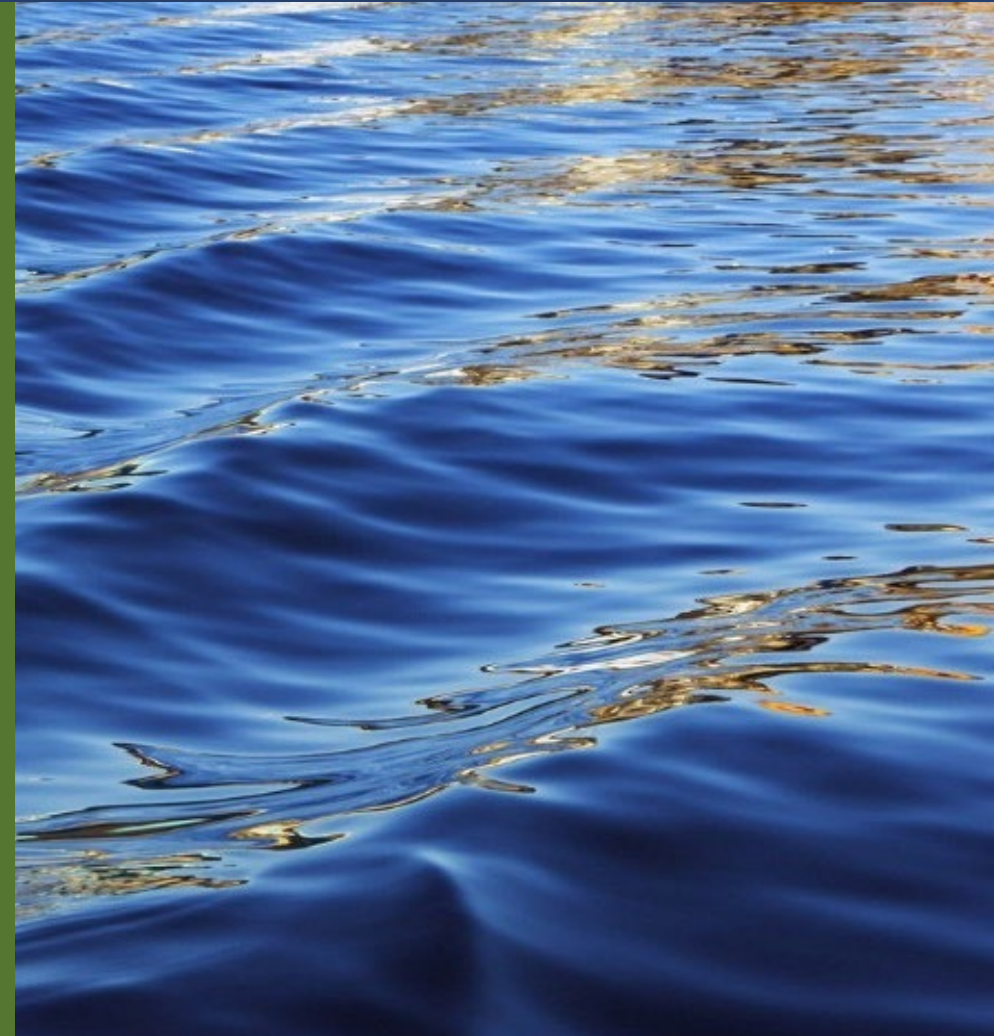
- *Timeline: 2-4 years*

The Study Technical and Policy Committees will make recommendations to VTrans on how to proceed.

NOTE: The study may conclude that construction is not needed.



Potential Concepts



Purpose and Need Statement: Vergennes PEL Study

The **purpose** is to reduce the impacts of through truck traffic, including safety, congestion, noise, vibration, and dust on Route 22A in downtown Vergennes. Transportation solutions that reduce truck related quality of life impacts should also meet the mobility, safety, and economic vitality needs of Vergennes and the neighboring communities.

A summary of the **needs** identified are detailed below.



Mobility and Access: Maintain opportunities for the movement of freight in the region and minimize and/or mitigate traffic impacts to other transportation corridors



Safety, Circulation and Resilience: Support the continued movement, resilience and safety of travel through downtown Vergennes and in the neighboring communities.



Quality of Life: Improve the quality of life and minimize negative property and environmental resource impacts in downtown Vergennes and neighboring communities.



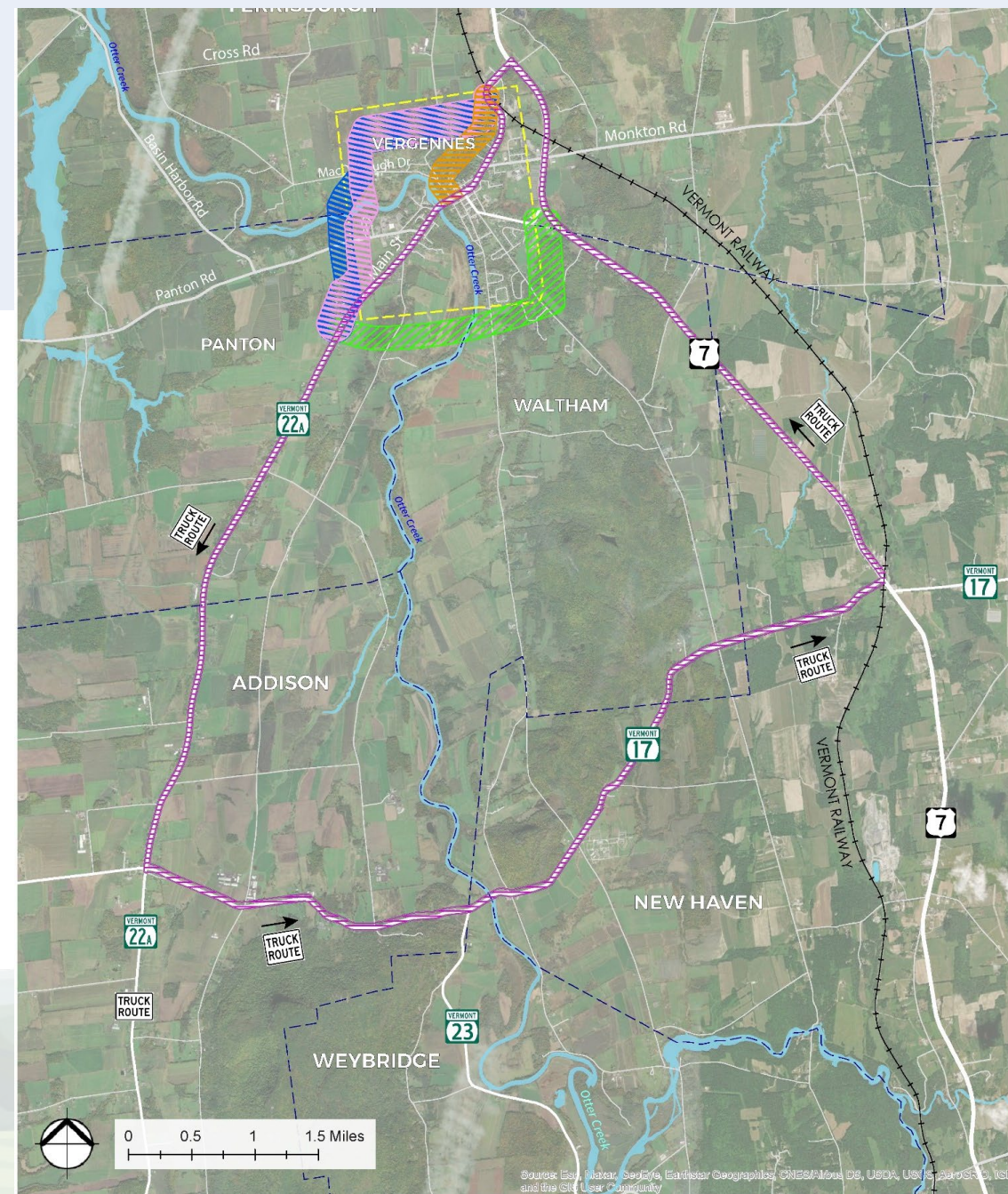
Land Use: Support local and regional land use plans and policies and state land use goals.



Economic Vitality: Promote economic vitality of downtown Vergennes, goods movement in Vergennes and neighboring communities, and support rural economy.

Transportation Solutions Being Studied

- 4 new roadways
- 1 concept to improve an existing roadway, Route 17
- A "No Build" option
- All routes have trade offs
 - Today's focus is on land uses around the potential new routes being considered by this Study
 - Future tasks will evaluate all transportation solutions



What is conceptual design? What properties might be impact?

The maps and videos shown tonight are **Conceptual designs** only and are subject to change

- Conceptual designs are very draft versions of a route design and location that help with information gathering and evaluation for this PEL study.
- All designs (new and existing roadways) will have property impacts.
- Draft and final designs will not be complete for many years (assuming one of the routes is built).
- As such specific property impacts will not be known for many years.

3D visualizations are shared on the project website www.vergennespel.com

Blue and Pink Routes

Strengths, weaknesses and opportunities

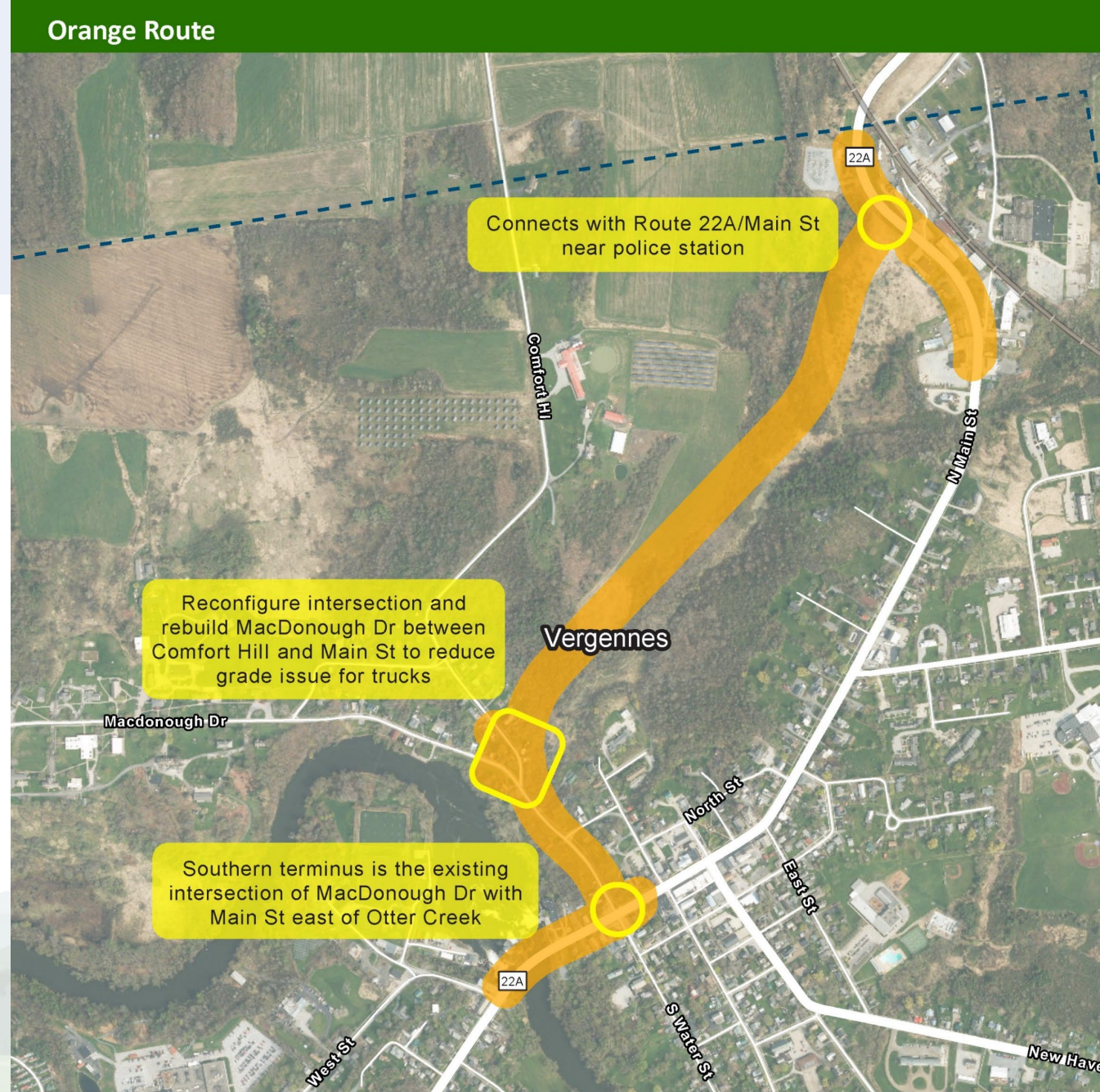
- Taller bridges
- Property impacts
- Wetland impacts
- Wildlife habitats
- Nearby cemetery
- ... and more!!



Orange Route

Strengths, weaknesses, and opportunities

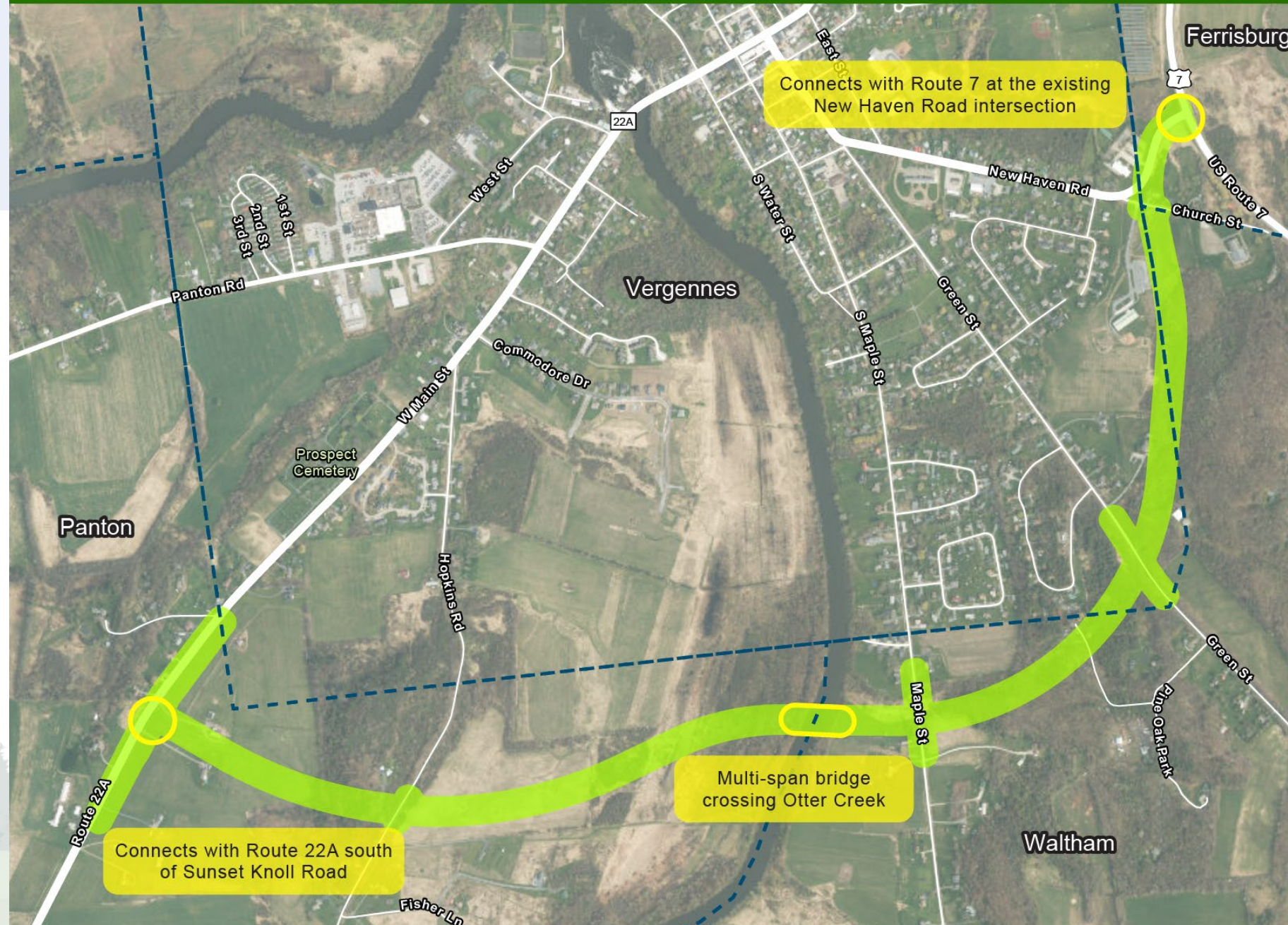
- Steep gradients → rebuild road section
- Property impacts
- No new bridge
- Close to existing impact area; entirely within Vergennes
- ... and more!

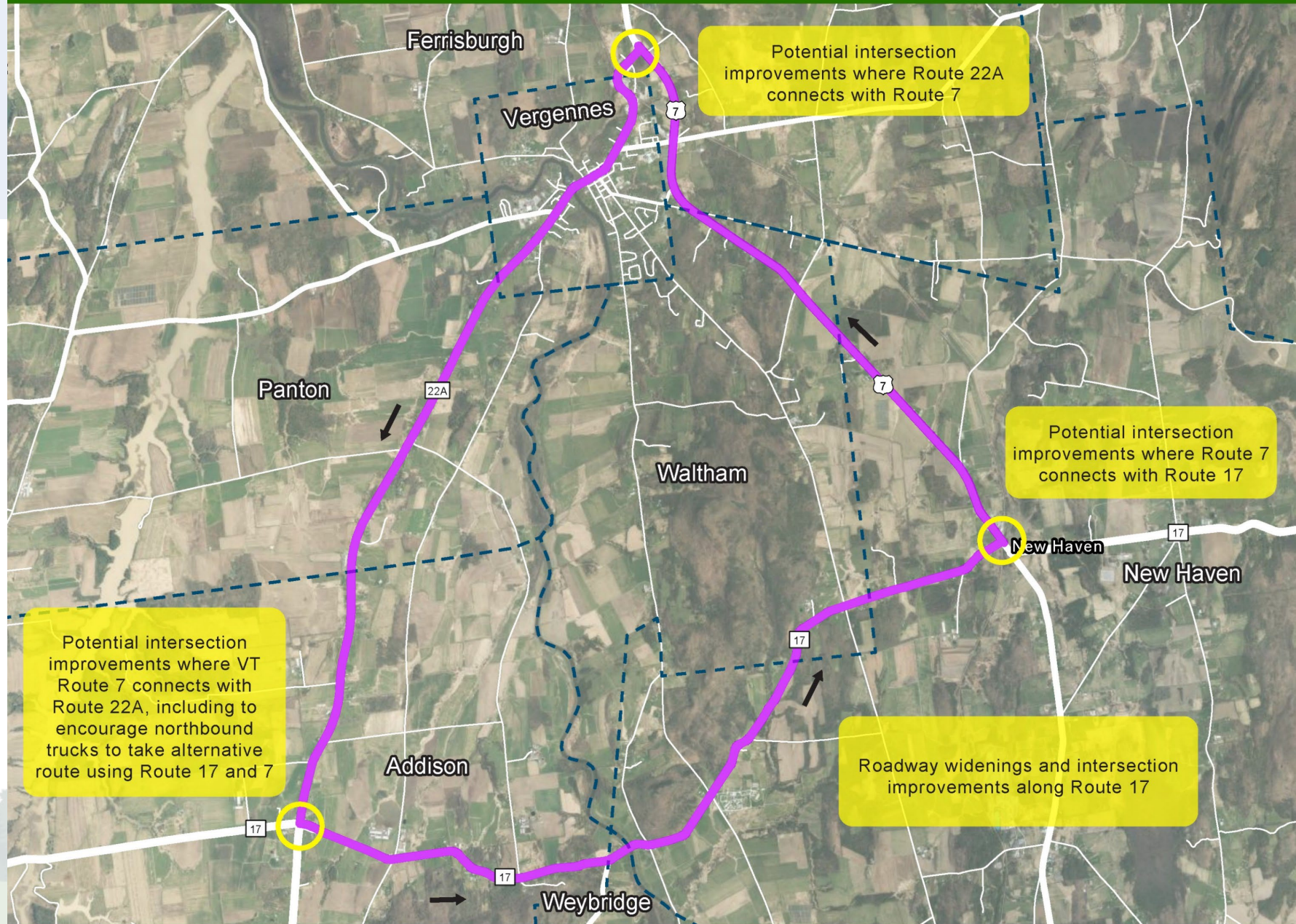


Green Route

Strengths, weaknesses and opportunities

- Smaller scale bridge than west of the falls
- Larger wetland impacts
- Property impacts
- ... and more!!





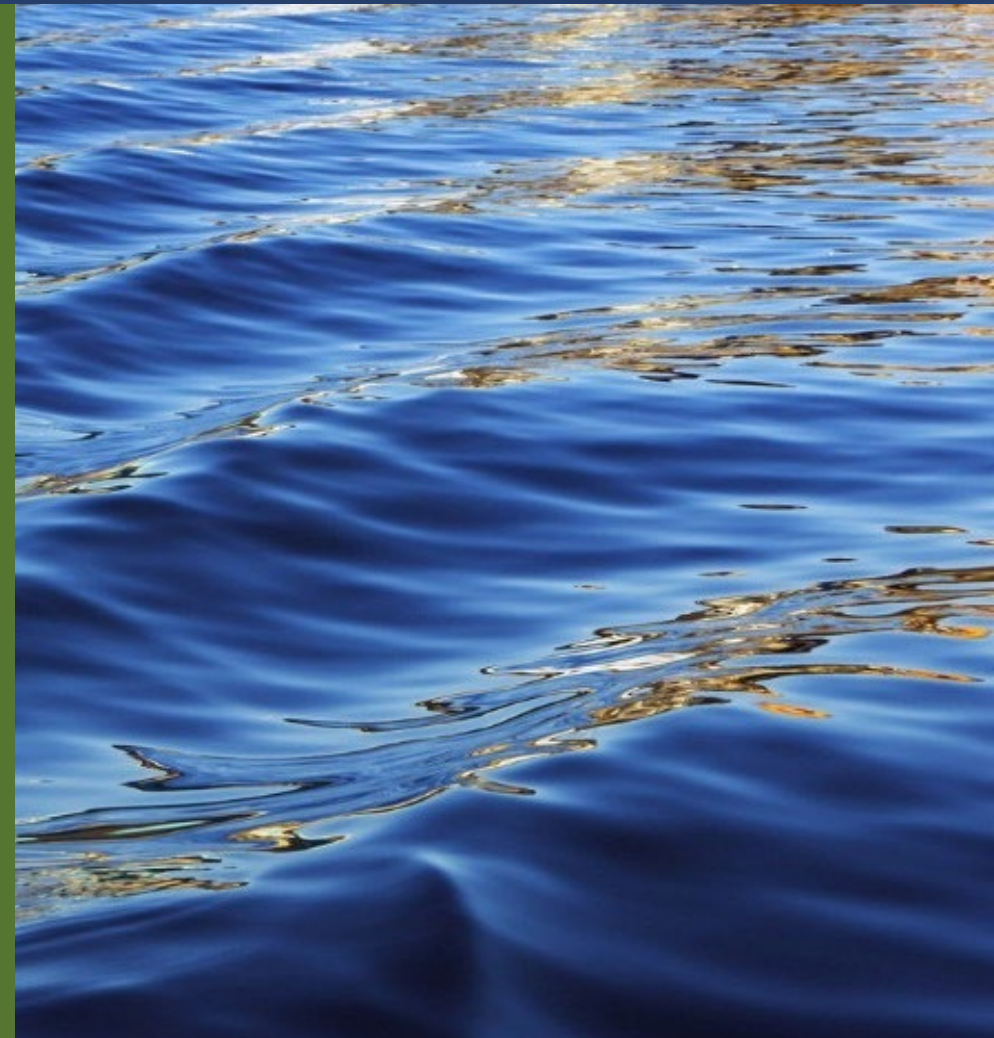
Purple Route

Strengths, weaknesses and opportunities

- Keeps some traffic in downtown Vergennes
- Intersection improvements?
- Farm vehicles
- Minimal property impacts
- Extra mileage
- Topography
- ... and more!!



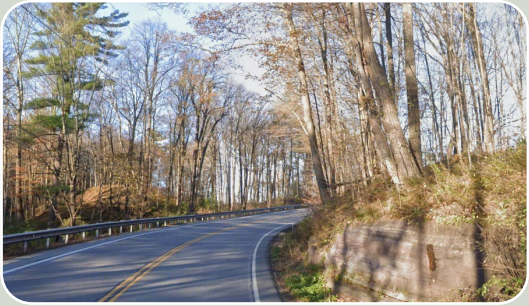
**Land + Use:
Planning From the Ground Up**



Land Use Visualization Timeline



When we talk about Land Use... what is “Land”?



Rocks and Soils

- Where, how and what to build
- Suitability for types of agriculture
- Local materials
- Soil erosion control



Waterways and Wetlands

- Flood risk management
- Biodiversity
- Carbon sequestration



Slopes and Contours

- Sun/ wind orientation
- Construction types
- Drainage patterns
- Forms viewsheds



Forests and Fields

- Natural resources
- Stewardship
- Habitat blocks
- Scenic views

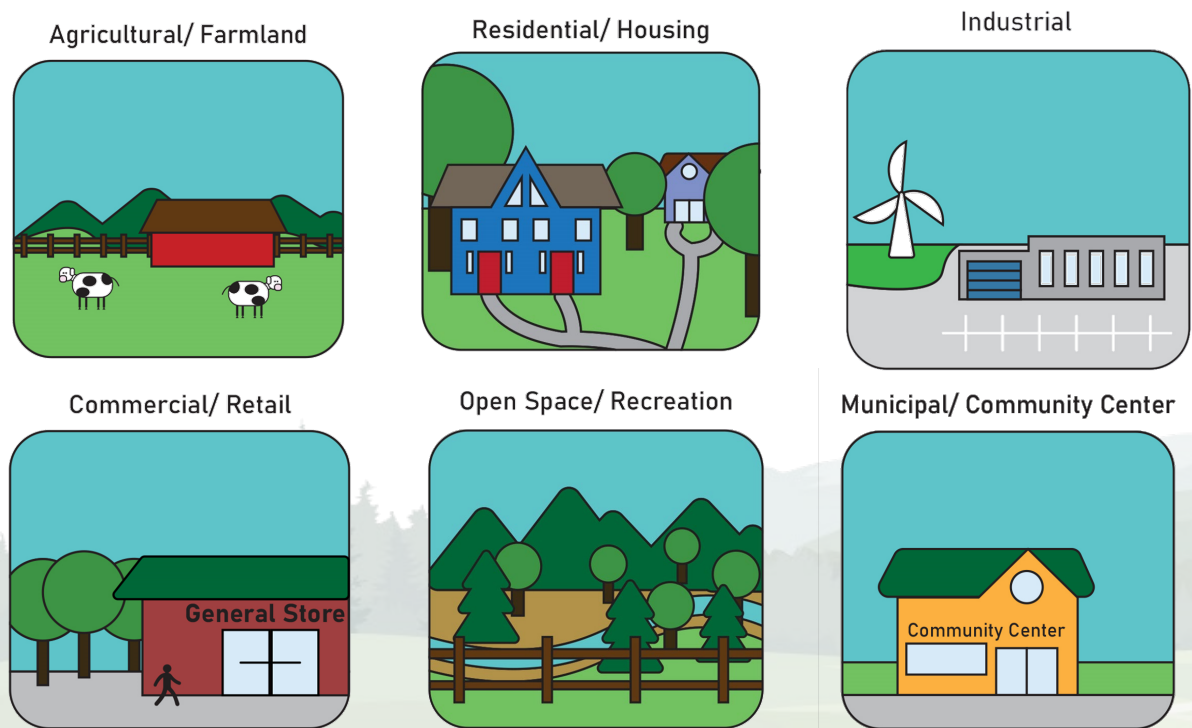
When we talk about Land Use... what is “Land”?

- Land means different things to different people!
- Land includes the history, day-to-day connections, and plans for tomorrow
- Features of the land guide where, how, and what to build, and how we experience "place"
- Important land elements are considered by state and federal agencies during planning and environmental review

Topic for tonight:
**What does land
mean to you?**

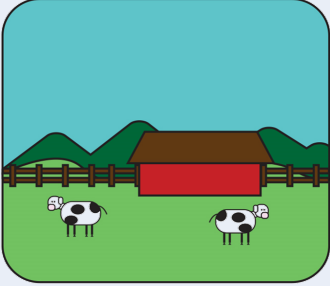
When we talk about Land Use... what is “Use”?

- There are many ways that land in Addison County is used today
- Tonight, we will focus on the following uses:



Topic for tonight:
What defines a
"good balance" of
land uses?

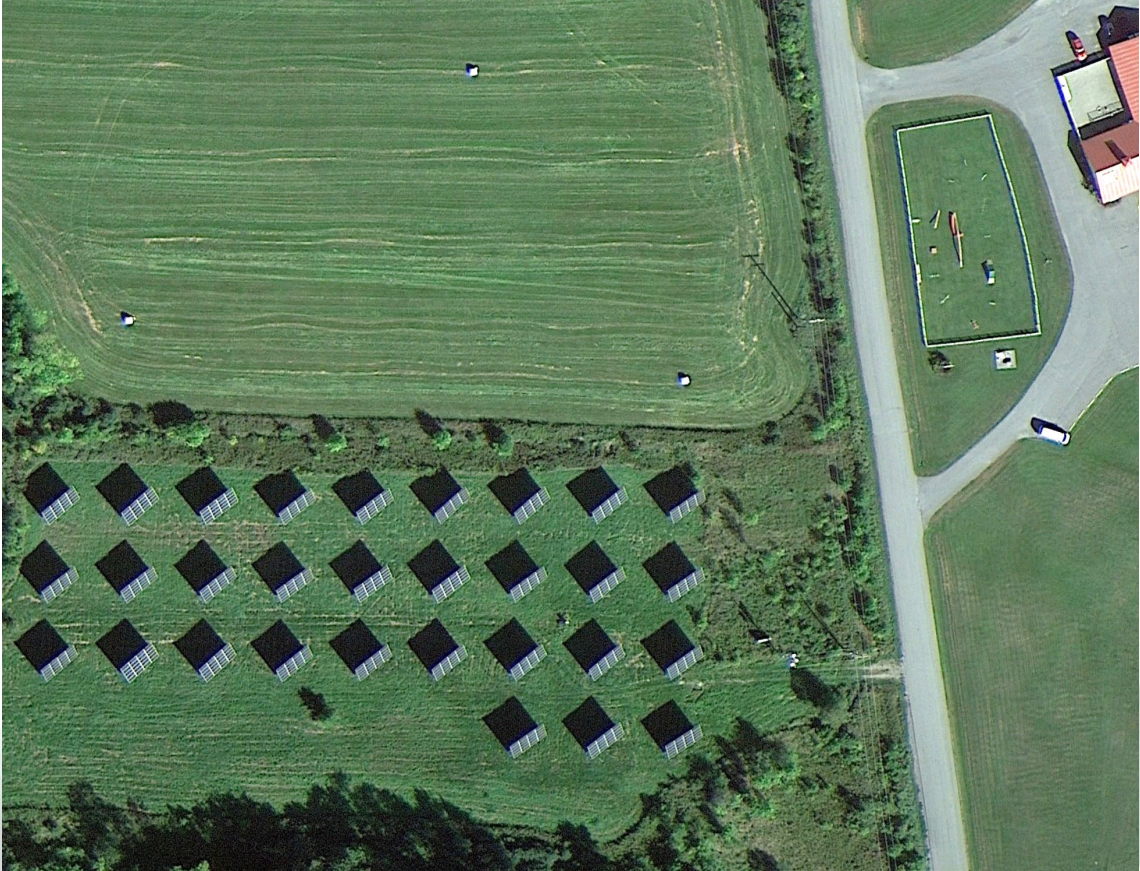
We'll use these icons on the maps →



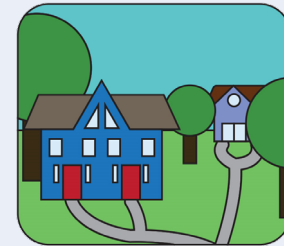
Agricultural / Farmlands / Working Lands



Scuttleship Farm
Panton Road, Panton



Solar Arrays, Outdoor Dog Agility Course/Play Yard
Comfort Hill Street, Vergennes



Residential / Housing

Smaller Lot, Neighborhood Cluster



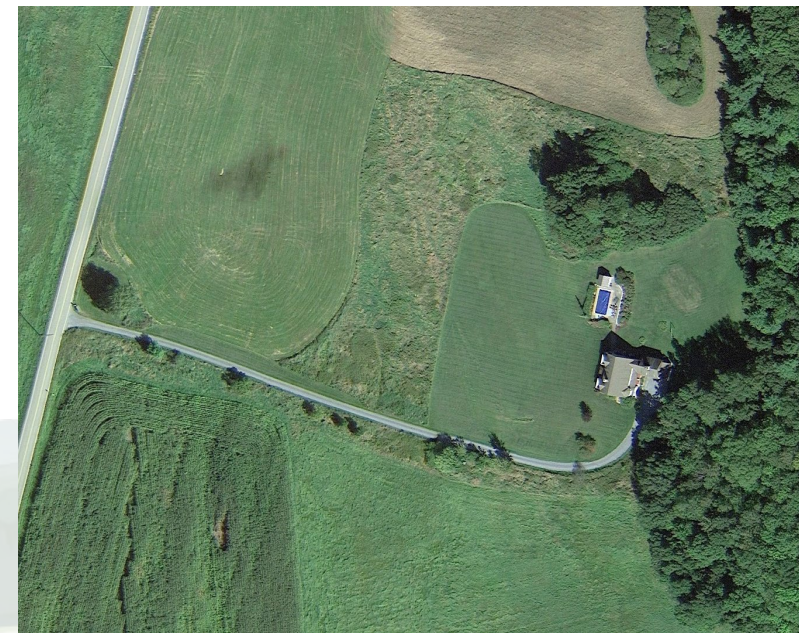
Vergennes and Waltham
around Maple Street and Green Street

Mid-sized Lot, Linear Settlement



Addison, along 22A

Larger Lot, Homestead



New Haven, Hallock Road



Walk-In Commercial / Retail and Services



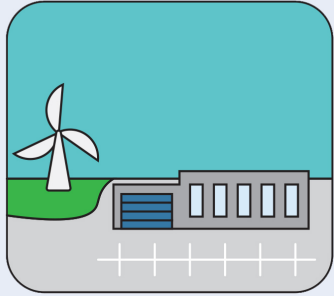
Kayhart's Home Grown Meat – Farm Store
Route 17, New Haven



The Basin Block
Main Street and Maple Street, Vergennes



Shaws Plaza
Ferrisburgh and Vergennes



Industrial / Light Industrial



WowToyz
Panton Road, Vergennes



Shacksbury Cider
Meigs Road, Vergennes



Maple Landmark Woodcraft
Exchange Street, Middlebury



Civic and Religious



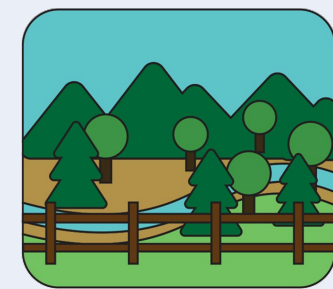
Community Baptist Church and Town Hall
Addison



Champlain Valley Christian Reformed Church
Waltham



Ferrisburgh Central School
Ferrisburgh



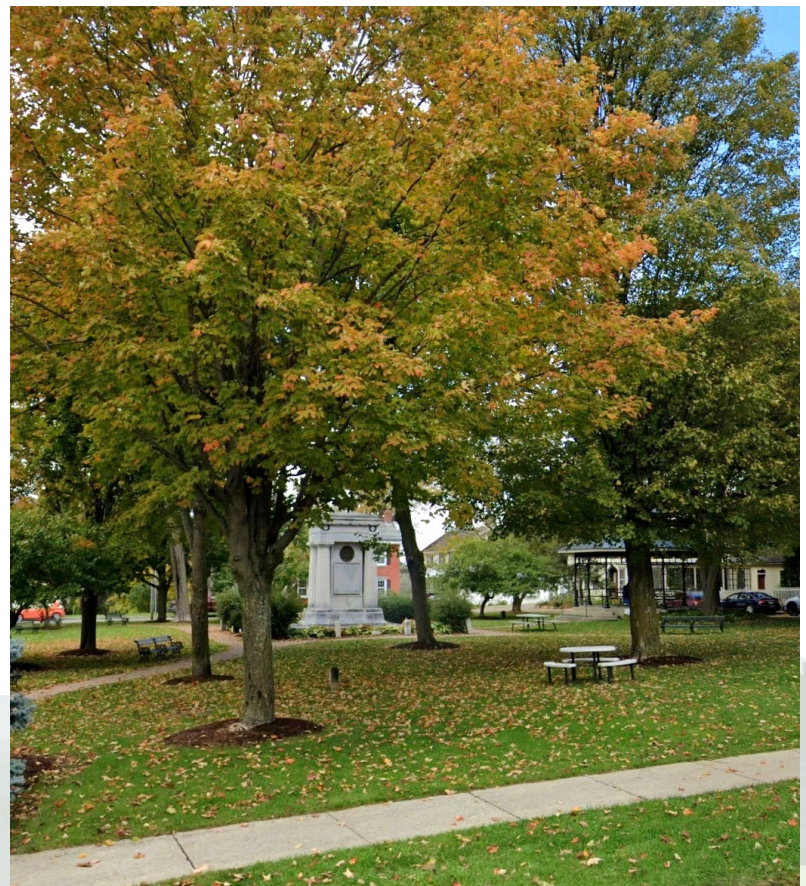
Open Space / Recreation and Conserved Land



Button Bay State Park
Ferrisburgh



Dead Creek
Addison, Panton, Ferrisburgh

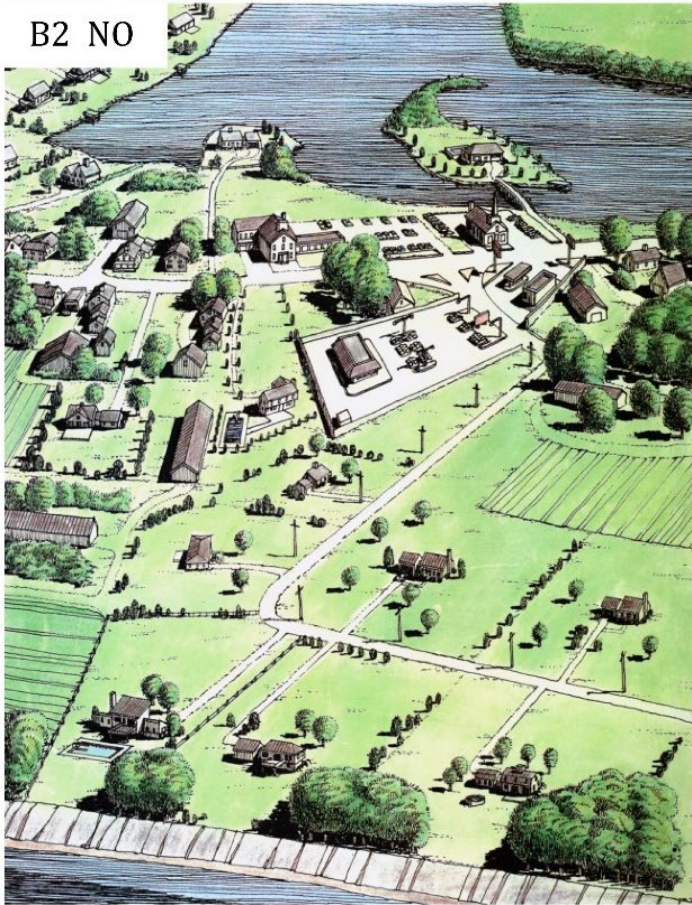


City Green
Vergennes

Land + Use = Making Choices.

For example: Spaced or Clustered?

B2 NO



Illustrations B1 and B2: Conventional rural subdivision and suburban sprawl

C2 YES

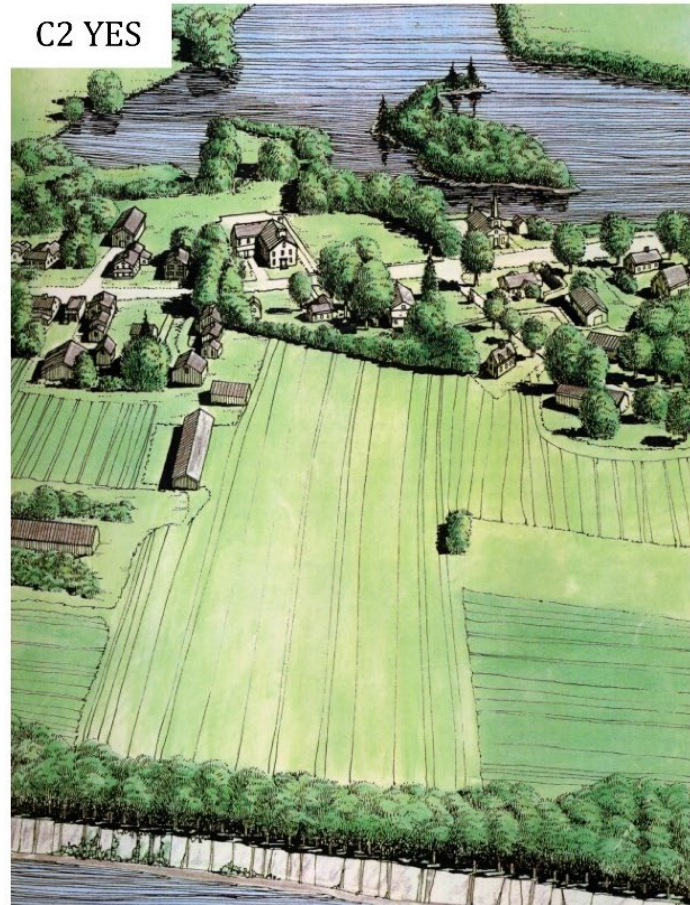


Illustration C1: Sensitively Designed Planned Unit Development (PUD) C2: Small New England Village Pattern of Development

Topics for tonight:
Do you have a preference on use arrangements?

Should the pattern be different for different places along a potential new road?

Transportation and Land Use

Ways to Travel

- Motor vehicles
 - Cars and motorcycles
 - Trucks
 - Local & long distance
- Active transportation (biking, walking, rolling)

Planning considerations

- Access
- Intersection Types
- Walking, Bicycling and other Human-Powered Travel

Topics for tonight:
How are the land, travel routes, and development patterns linked?

How do they influence each other?

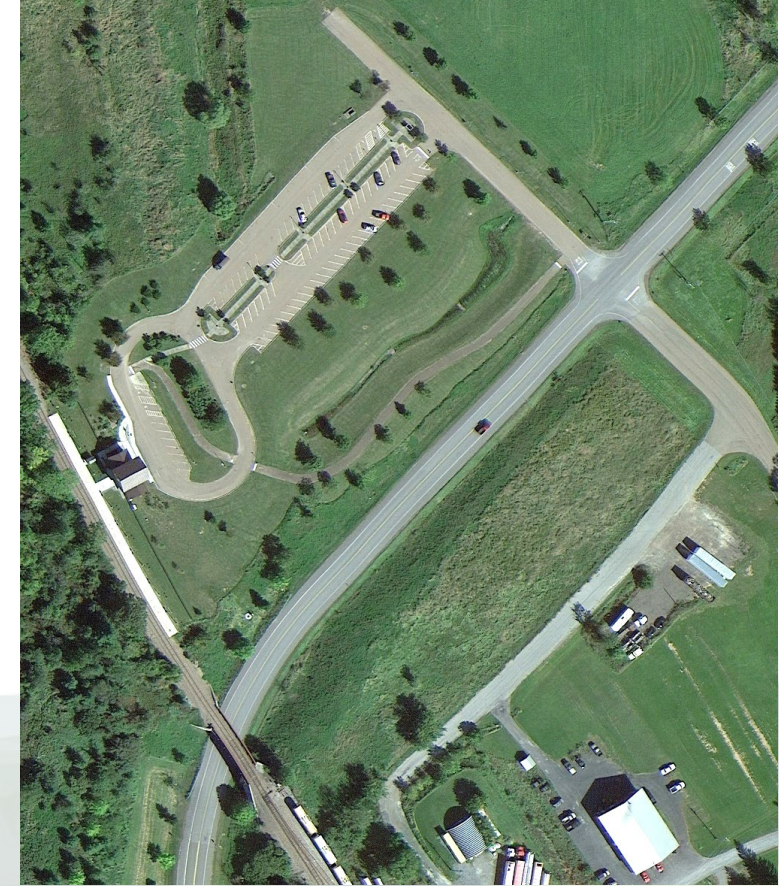
Access: Cross Streets, Driveways, Linkages



Most homes on connecting streets



Homes directly access main road



Road to Train Station linkage

Intersections: Four-ways, Roundabouts, Jughandles



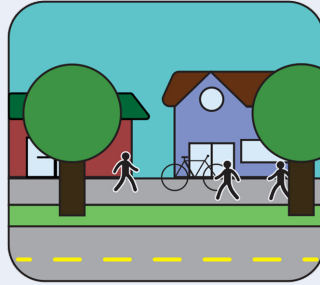
Four-way: Addison Four Corners



Roundabout: Hyde Park, VT



Jughandle: Webster Rd, Shelburne



Walk / Bike Facility



Sidewalk and Crosswalk, Vergennes



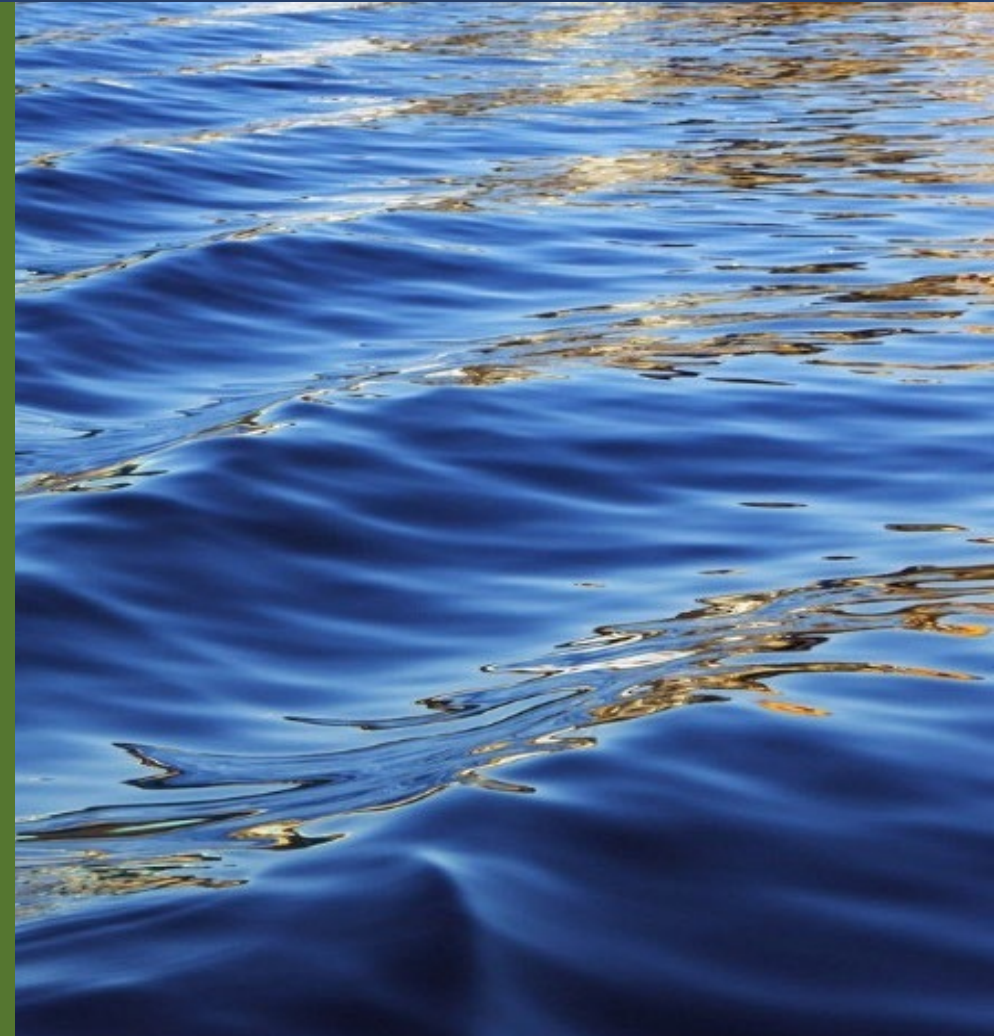
Multi-Use Path, Colchester



Bike Lane, Shelburne



Break-out Groups



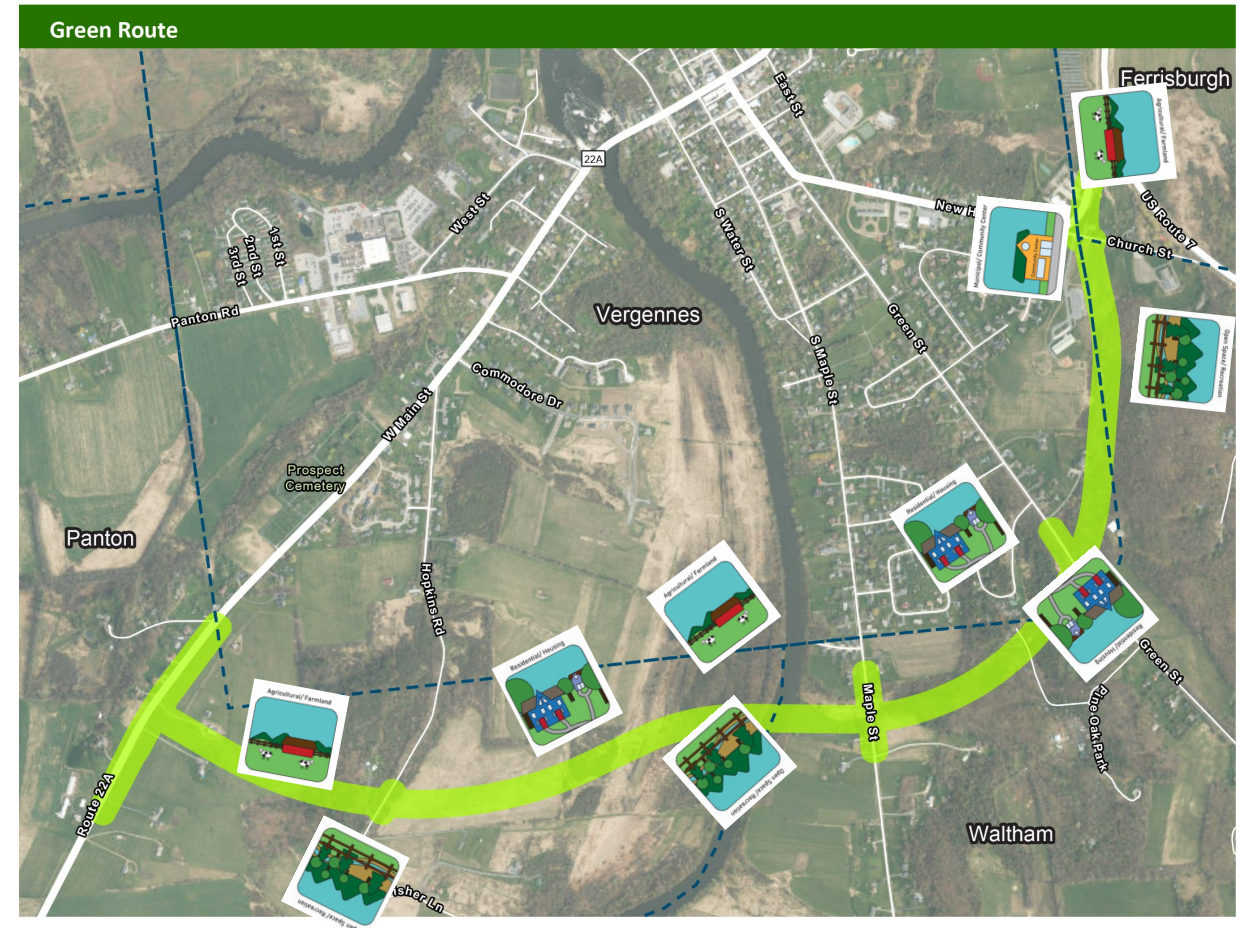
Guidelines

Your input will be used to develop land use recommendations that go into the Study's final report

Rules of engagement:

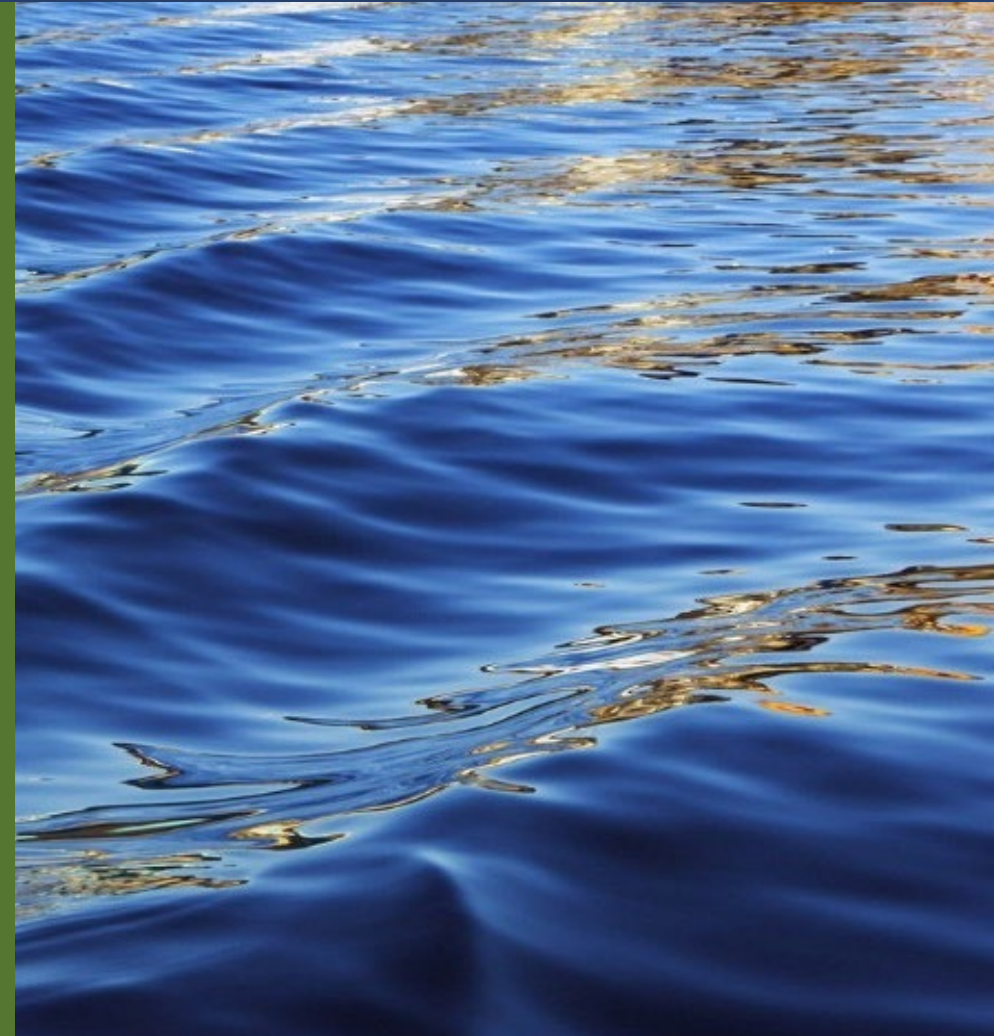
- This is a public discussion, not a debate
- Everyone is encouraged to participate
- Listen to and respect other points of view

If the [COLOR] Route is built, what is your vision for the land uses along it?





Next Steps and Other Comments



First half of 2024

- ***Task 5: Integrated Transportation & Land Use Alternatives***
 - Develop integrated transportation/land use plans
 - Planning Commission meetings
- ***Task 6: Evaluation and Refinement***
 - Environmental impact analysis
 - Traffic Analysis
 - Evaluate routes
 - Focus groups and public meetings

Second half of 2024

- Task 7: Implementation Plan

2025

- Complete PEL Report

Other Questions and Comments



Open discussion related to the routes being studied through the PEL Study

Study website <https://vergennespel.com/>

- summaries of tasks already completed
- visualizations and survey results just added
- sign up for email updates

Have additional questions or comments?

- Comments related to tonight's workshop by 1/19
- Study email: vergennespel@gmail.com

Community Liaison, Jim Gish: jgish@vhb.com